



Stepney Way, London, E1

BUTLER  STAG



**Guide Price - £350,000 to £375,000**  
**Discover this charming and impeccably kept one-bedroom, one-bathroom apartment, perfectly positioned in the heart of Stepney Green. Offering a bright and welcoming atmosphere, this home is ideal for first-time buyers, professionals, or investors looking for a stylish space in a vibrant and well-connected area.**



## Leasehold

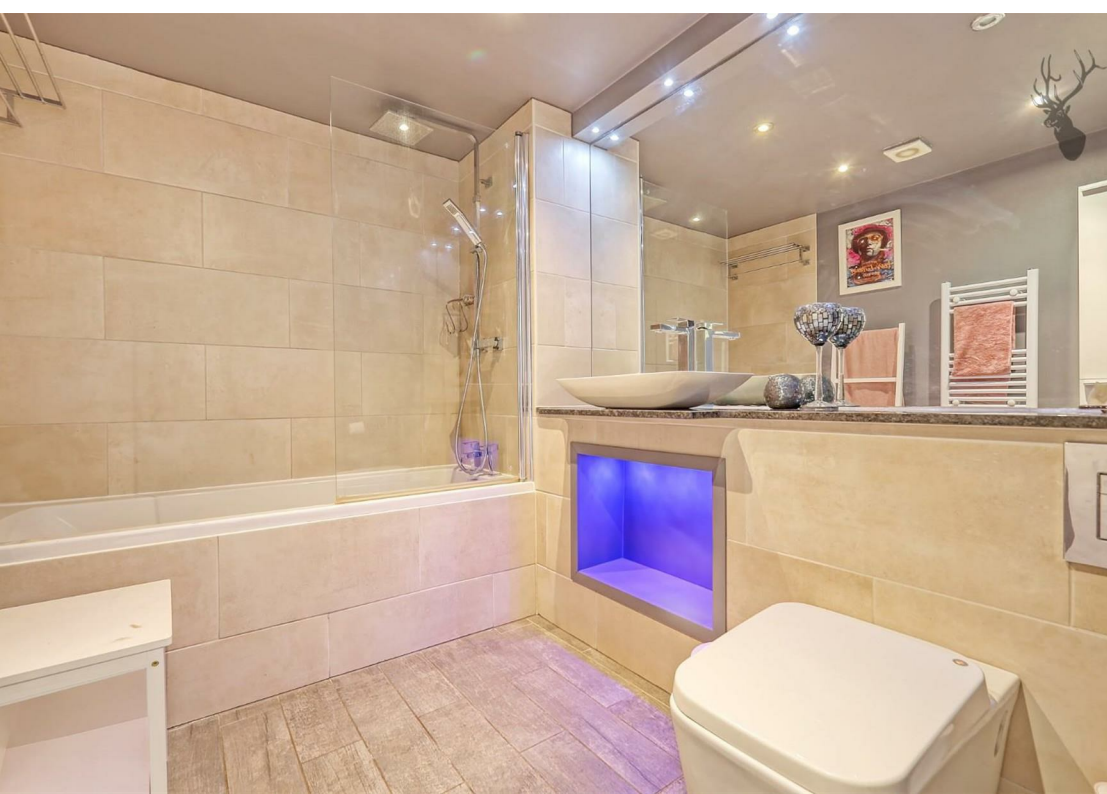
- One Bedroom Apartment
- Private South Facing Balcony
- Private Block
- EWS1 Compliant
- Lift Access
- Secure Entry System
- Communal Car Park
- Close to Stepney Green Station

Situated on a peaceful street, the apartment features a private south-facing balcony, allowing an abundance of natural light to flood the living space throughout the day. Whether you're enjoying a morning coffee or relaxing in the evening, the balcony offers a perfect outdoor retreat with open skies and sunshine.

Inside, the property has been beautifully maintained to a high standard. The spacious open-plan living and dining area feels warm and inviting, complemented by neutral décor and large windows that maximize the natural brightness. The modern kitchen is fully fitted with contemporary appliances, offering ample storage and preparation space.

The generously sized bedroom provides a calm and peaceful haven, complete with built-in storage solutions. The bathroom is sleek and stylish, featuring a full-sized bathtub and high-quality fixtures.





## Stepney Way

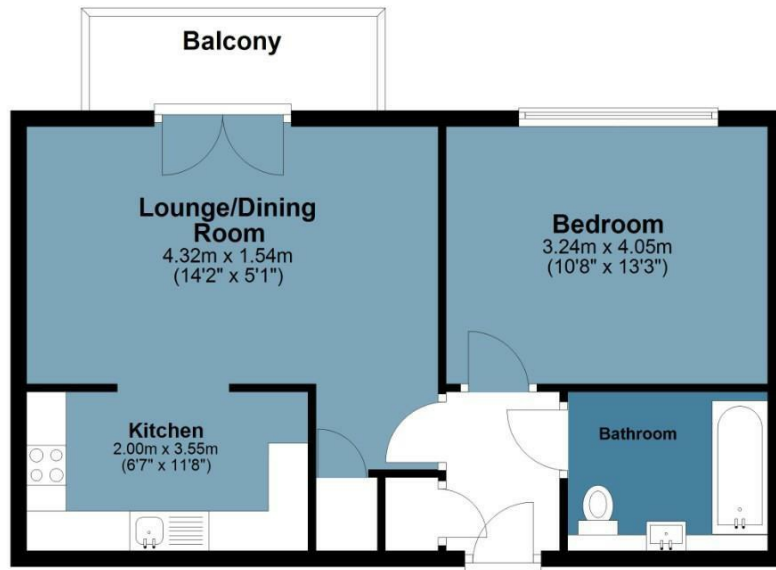
Approx. Gross Internal Area 49.9 Sq M ( 536.6 Sq Ft )

**BUTLER & STAG**



### Second Floor

Approx. 49.9 sq. metres (536.6 sq. feet)



Measurements are approximate and for illustration purposes only. While we do not doubt the accuracy and completeness, we advise you conduct a careful independent assessment of the property to determine monetary value.

© @modephoto.uk www.modephoto.co.uk

**BUTLER & STAG**

☎ 020 8102 1236

🏠 508 Roman Road, Bow, London, E3 5LU

✉ bow@butlerandstag.com

[www.butlerandstag.uk](http://www.butlerandstag.uk)

IMPORTANT NOTICE - These particulars have been prepared in good faith and they are not intended to constitute part of an offer or contract. We have not performed a structural survey on this property and the services, appliances and specific fittings have not been tested. All photographs, measurements, floor plans and distances referred to are given as a guide and should not be relied upon.